

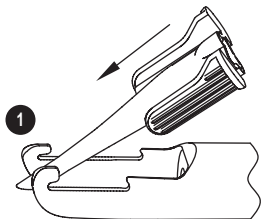
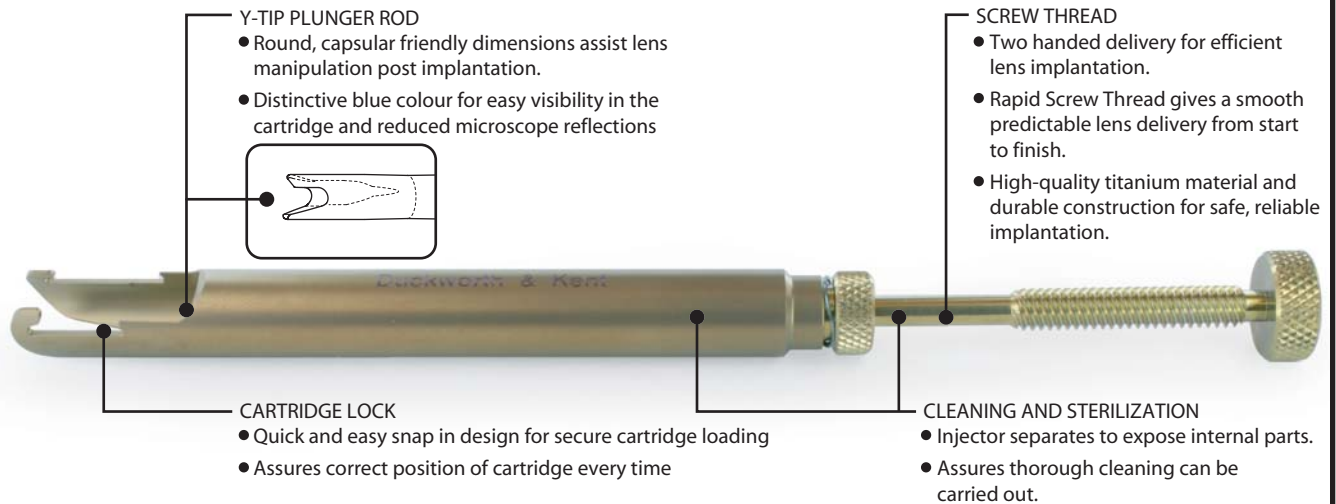


Duckworth & Kent

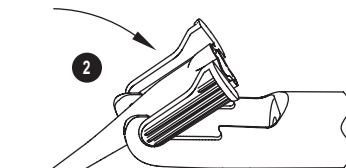
ophthalmic titanium surgical instruments

DK7791, Screw Thread Injector for AMO One Series™ Ultra Cartridge

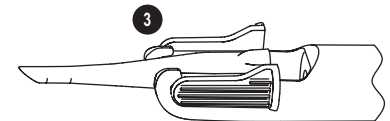
Simple delivery of the AMO TECNIS® 1-Piece IOL through the for AMO One Series™ Ultra Cartridge



1
Cartridge loads, tip first into front of injector and held by slots at front of injector.



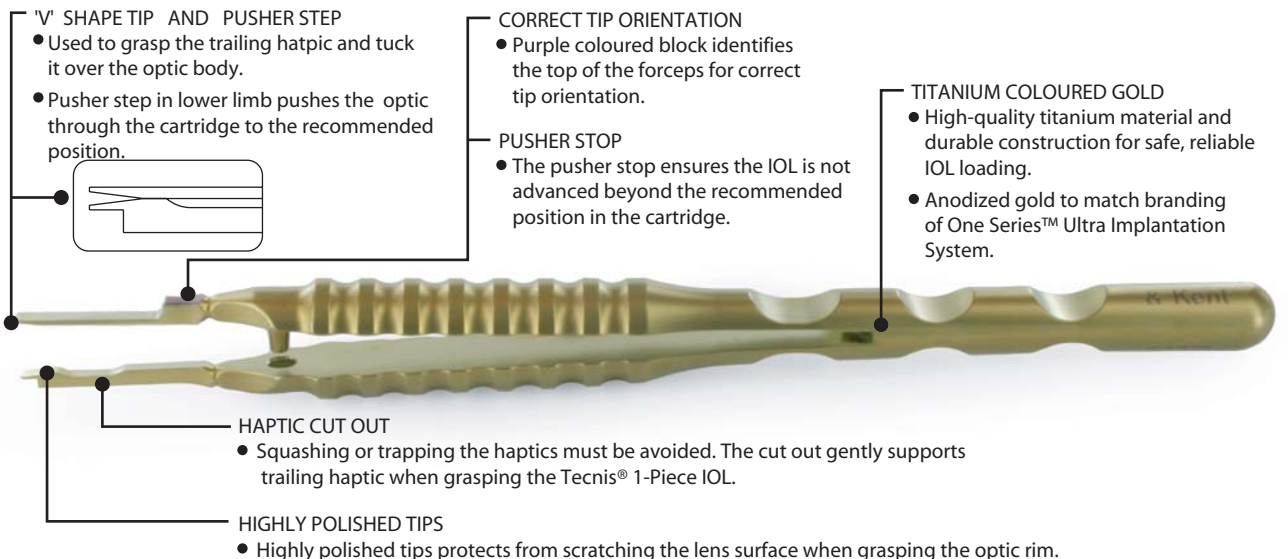
2
Push on back end of cartridge to securely snap into handpiece.



3
Both sides of cartridge should snap into place

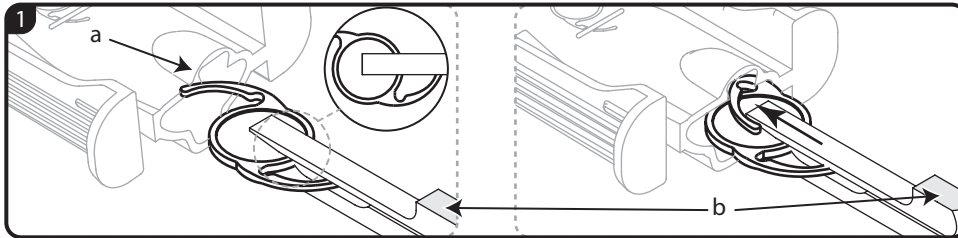
DK7726 Lens Loading Forceps for AMO One Series™ Ultra Cartridge

Simple consistent loading for the AMO One Series™ Ultra Cartridge and AMO TECNIS® 1-Piece IOL

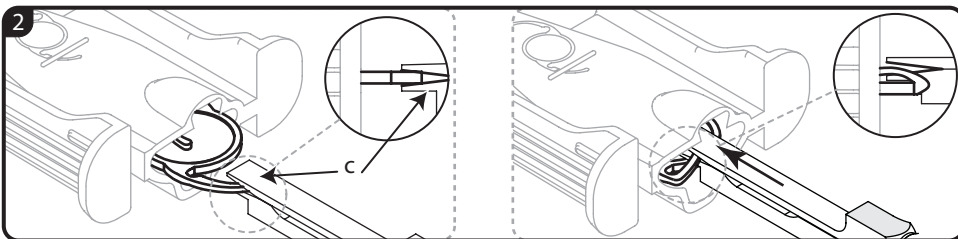


Loading the AMO One Series™ Ultra Cartridge

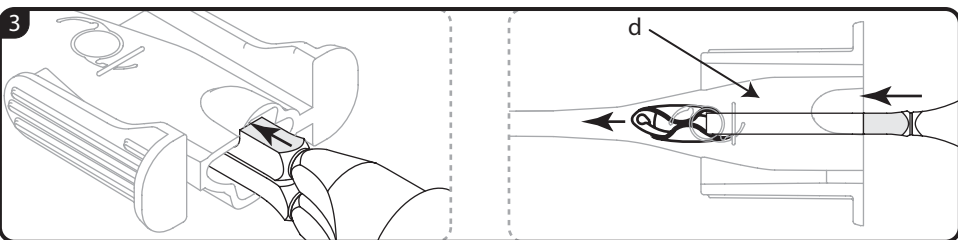
To ensure a successful IOL delivery and implantation, correct loading and setting of the IOL into the cartridge is essential. Duckworth & Kent always recommends using the Loading Forceps (DK7726) which feature highly polished surfaces for easier loading without damage to the IOL.



1. Fill cartridge with viscoelastic. Using forceps grasp the lens by the optic with the trailing haptic resting in the cut out of the forceps tips. Correct forceps orientation is identified by the coloured markings (fig. 1b) being at the top. Use the IOL diagram on the cartridge for correct IOL orientation. Do not grasp the trailing haptic. Hold the cartridge with the IOL diagram facing up. Engage the lead haptic with the canopy (fig. 1a) to initiate tucking of the haptic over the lens optic body. Continue advancing the lens into the cartridge so that the lead haptic sweeps over the optic body in one motion. Stop when half the optic is inside the cartridge. Ensure that the lead haptic is fully tucked over the optic body before proceeding.



2. Close the forceps tips. Using the V forceps (fig. 2c) grasp the trailing haptic and tuck it over the optic body. With the forceps closed, the step in the lower limb pushes the optic into the cartridge.



3. In one motion advance the lens down the cartridge until the forceps stop. Ensure the lens is past the "line" (fig. 3d) so that the lens can be held in the folded position until it is ready to be delivered. Once the lens is past the "line", ensure that the lens and haptics remain in place after retracting the forceps.

Duckworth & Kent Ltd.

Terence House
7 Marquis Business Centre
Royston Road, Baldock
Herts SG7 6XL England

Tel: +44 (0)1462 893254 Fax: +44 (0)1462 896288

Web: www.duckworth-and-kent.com

Email: info@duckworth-and-kent.com



D&K® is a registered trademark. All other brand names are trademarks or registered trademarks of their respective owners. All schematic line drawings, photographs and copy in this leaflet are fully protected by copyright. No part of this leaflet may be reproduced in any form without prior written permission. We reserve the right to make changes at any time, without notice, in product specifications and availability. Descriptive, typographic, or photographic errors are subject to correction. Name(s) of instruments are often comprised of surgeon's name, combination of surgeons' names or by the category of the instrument.

© October 2009 Duckworth & Kent Ltd.
Revised 22.03.2010