



Duckworth & Kent

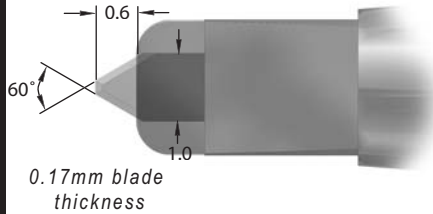
Ophthalmic Titanium Surgical Instruments

Packard - Rosen LRI Set

Titanium Instruments

4-621

Packard - Rosen LRI Diamond Knife

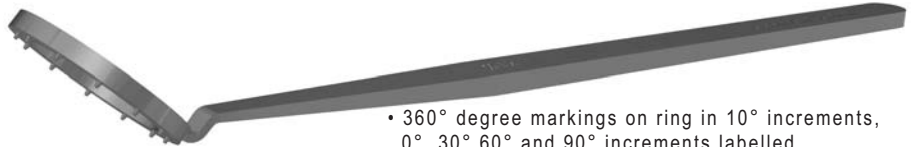


- Blade preset at 600 micron setting / extension
- Footplate designed to fit inside degree marker
- Distance from footplate to centre of diamond blade is 500 microns (0.5mm)
- Retractable long handle
- Length 118.0mm

Trifacet blade with single footplate allows easier visibility of knife as it passes through corneal tissue; 600 micron preset setting.

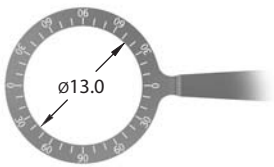
Packard - Rosen LRI Degree Fixation Marker

9-706 $\varnothing 12.0\text{mm}$



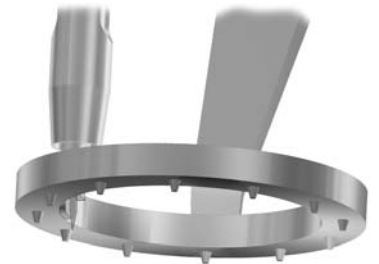
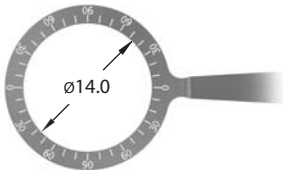
- 360° degree markings on ring in 10° increments, 0°, 30°, 60° and 90° increments labelled
- Range of sizes from 11.0mm to 14.0mm diameters
- 12 point fixation
- Flat handle, length 116.5mm

9-706-1 $\varnothing 13.0\text{mm}$

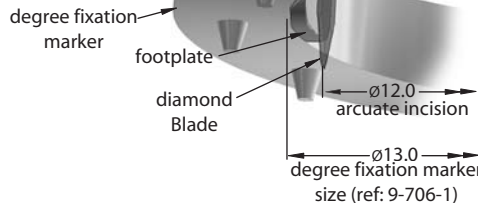
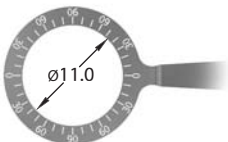


The single footplate profile of the diamond knife locates inside the degree fixation marker. By allowing the blade to follow the inner circumference of the degree fixation marker, a controlled incision can be created.

9-706-2 $\varnothing 14.0\text{mm}$



9-706-3 $\varnothing 11.0\text{mm}$



Diamond blade is offset 500 microns (0.5mm) from the inside of Degree Fixation Marker. With a $\varnothing 13.0\text{mm}$ LRI Degree Fixation Marker the Diamond Knife will create a $\varnothing 12.0\text{mm}$ arcuate incision.

Duckworth & Kent Ltd.

Terence House
7 Marquis Business Centre
Royston Road, Baldock
Herts SG7 6XL England

Tel: +44 (0)1462 893254 Fax: +44 (0)1462 896288
Web: www.duckworth-and-kent.com
Email: info@duckworth-and-kent.com

www.duckworth-and-kent.com

